



**LOCATION**

Located in the heart of Makati City. Berjaya Makati is an ideal option for discerning travellers. It is the vicinity of Manila's best recreation facilities and finest attractions

**ACCOMODATION**

3-star • 223 rooms and suites • air-conditioning • multi-lingual cable television • NDD / IDD phone with hotel information services • in-room Wi-Fi access • safe deposit box • mini bar • coffee and tea facilities • hairdryer • private bath shower

**ROOM CATEGORIES**

Room Category	Room Size	Room Category	Room Size
Deluxe Room	31m <sup>2</sup>	Premier Room	31m <sup>2</sup>
Deluxe Studio Room	47m <sup>2</sup>	Premier Studio Room	47m <sup>2</sup>
		2 Bedroom Deluxe	78m <sup>2</sup>

**HOTEL FACILITIES & SERVICES**

International buffet breakfast • indoor swimming pool with view • conference and meeting rooms • wireless internet access throughout the public area • 24-hour in-room dining • in-room massage service • business centre and currency exchange • transport service • all major credit cards accepted

**RESTAURANTS & BARS**

**El Prado:** coffee house serving sumptuous a la carte choices renowned Asian, local and international favourites for breakfast, lunch and dinner

**El Paseo:** bar serving delectable appetizers, cocktails and snacks, with a wide selection of beers and spirits

**Las Ramblas:** hotel lobby lounge area with night band performance serving Asian and international dishes with wide selections of beers, wines and spirits

**Veranda:** side walk cafe serving Asian and International cuisines and snacks

**MEETING FACILITIES**

Las Ventas (up to 180 persons), divisible into 3 meeting rooms • Las Monumental (up to 180 persons), divisible into 3 meeting rooms

**LOCAL ATTRACTIONS**

300 meters away from P. Burgos & 500 meters away from Jupiter Streets, popular bars and restaurants • walking distance from Century City Mall • 2km from Rockwell Center upscale shops • 2km from Glorietta and Greenbelt Malls • 2km from Ayala Museum • 9km from Cultural Center of the Philippines, Monumental Rizal Park, Intramuros and Fort Santiago.

**TRANSPORTATION**

By Air	Duration	By Road	Duration
From Hong Kong to Ninoy Aquino International Airport (NAIA)	1 hour and 30 minutes	From Manila International Airport to Hotel	30 minutes
From Singapore to Ninoy Aquino International Airport (NAIA)	4 hours	From Manila Domestic Airport to hotel	30 minutes
From Kuala Lumpur to Ninoy Aquino International Airport (NAIA)	4 hours	From Manila Port Area to hotel	1 hour
		Walking Distance	Duration
		From Buendia Train Station to Hotel	15 minutes

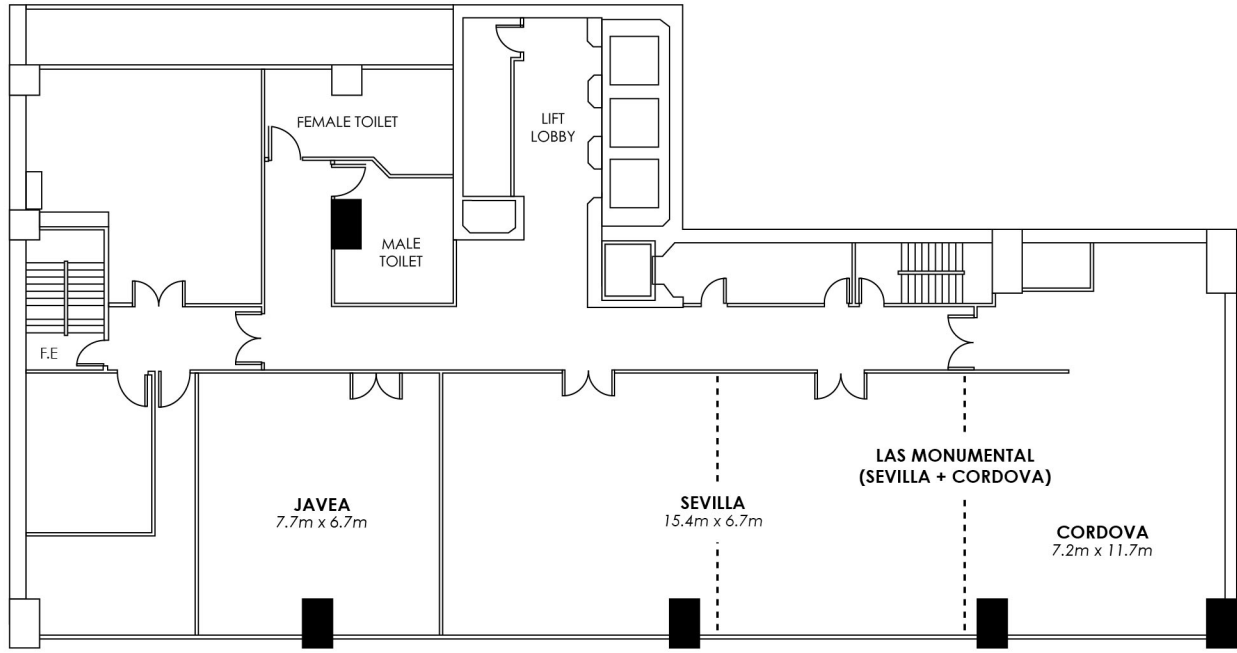
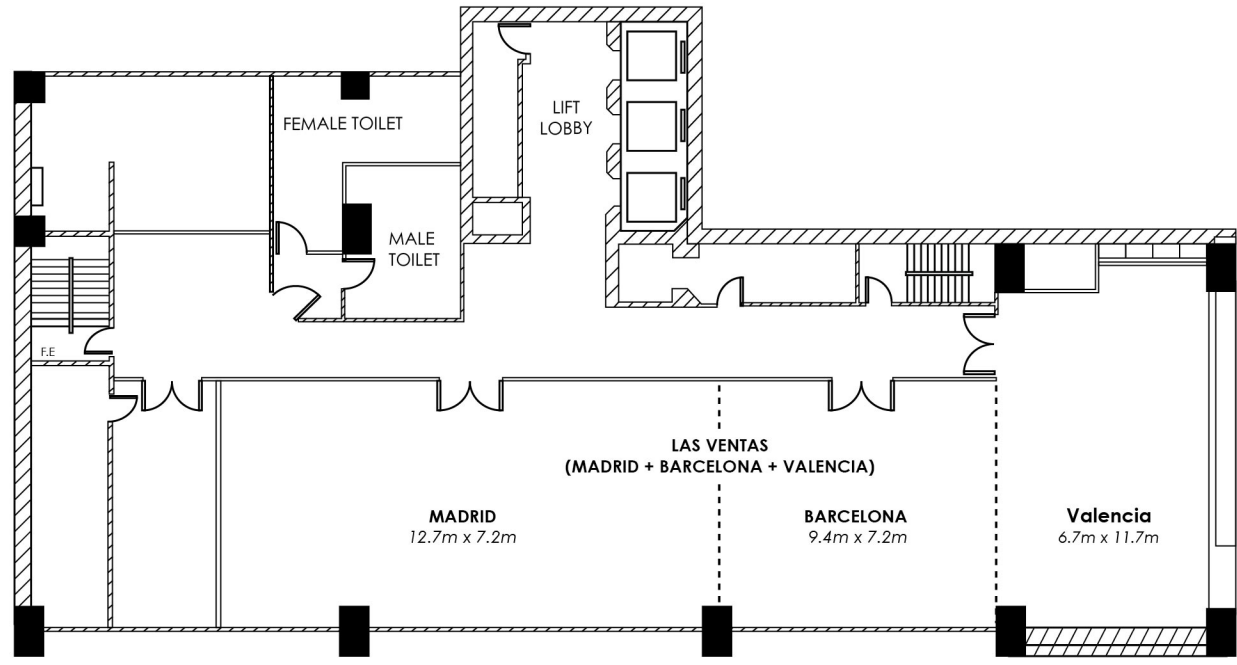
**BERJAYA MAKATI HOTEL - PHILIPPINES**

managed by Berjaya Hotels & Resorts (BHR), a division of Berjaya Land Berhad (201765-A)

7835 Makati Avenue Corner Eduque Street, Makati City, Philippines 1209

📞 + (632) 7-750-7500    📞 + (632) 7-750-6783    📧 manila.inquiry@berjayahotel.com

# FLOOR PLAN MEETINGS & EVENTS



## MEETINGS & EVENTS SPACE

ROOM	LOCATION	DIMENSION (M)	SEATING CAPACITY				
			U-SHAPE	CLASSROOM	THEATRE	BANQUET	BOARDROOM
<b>Las Ventas</b> (Madrid, Barcelona & Valencia)	3 <sup>rd</sup> Floor		60	150	200	180	70
<b>Madrid</b>	3 <sup>rd</sup> Floor	12.2 x 7.2	30	60	80	50	30
<b>Barcelona</b>	3 <sup>rd</sup> Floor	9.4 x 7.2	25	40	60	50	25
<b>Valencia</b>	3 <sup>rd</sup> Floor	6.7 x 11.7	30	30	40	40	20
<b>Las Monumental</b> (Sevilla & Cordova)	4 <sup>th</sup> Floor		60	120	160	150	70
<b>Sevilla</b>	4 <sup>th</sup> Floor	15.4 x 6.7	30	60	80	50	30
<b>Cordova</b>	4 <sup>th</sup> Floor	7.2 x 11.7	25	40	60	50	25
<b>Javea</b>	4 <sup>th</sup> Floor	7.7 x 6.7	20	25	30	20	15